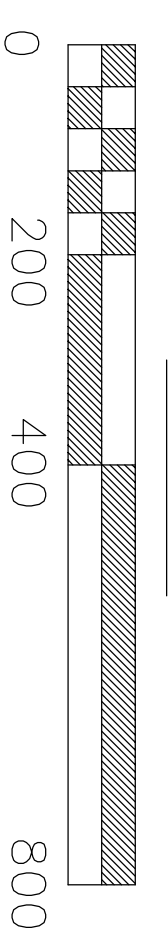
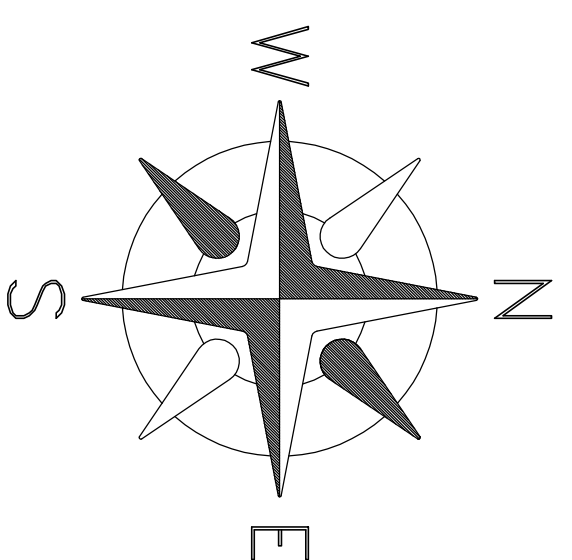


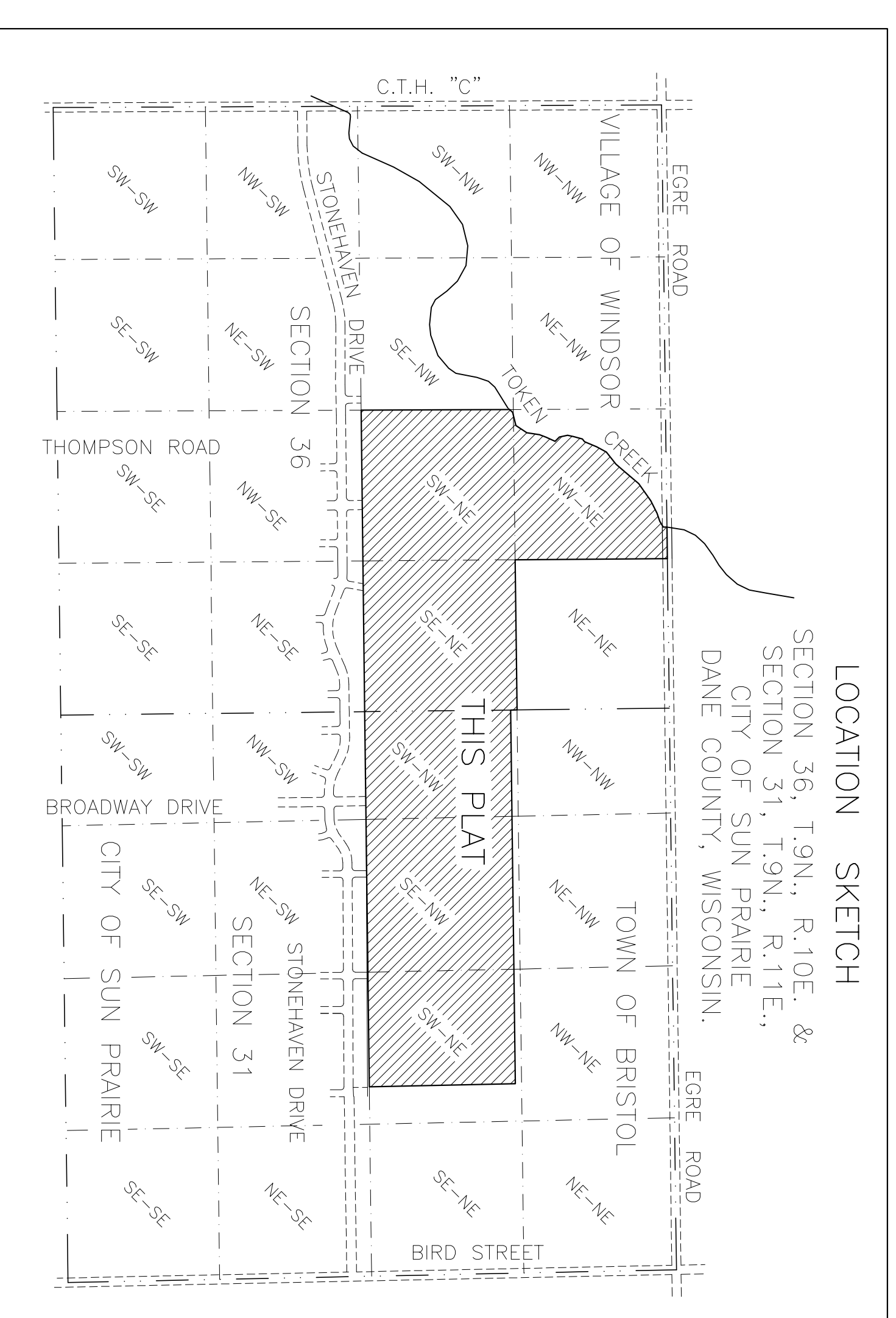
THE RESERVE PHASING PLAN

LOCATED IN THE NW 1/4 OF THE NE 1/4, THE SW 1/4 OF THE NE 1/4,
AND THE SE 1/4 OF THE NE 1/4, SECTION 36, T9N, R10E,
THE SW 1/4 OF THE NW 1/4, THE SE 1/4 OF THE NW 1/4,
AND THE SW 1/4 OF THE NE 1/4, SECTION 31, T9N, R11E,
CITY OF SUN PRAIRIE, DANE COUNTY, WISCONSIN
PHASE I 2017: 15.56 ACRES



SCALE

LOCATION SKETCH
SECTION 36, T.9N., R.10E. &
SECTION 31, T.9N., R.11E.,
CITY OF SUN PRAIRIE
DANE COUNTY, WISCONSIN.



ENGINEER
MONTGOMERY ASSOCIATES RESOURCE SOLUTIONS, LLC
DEBBIE HAIFIELD, P.E.
119 S. MAIN STREET
COTTAGE GROVE, WI 53527
(608) 839-4422

SURVEYOR
PAULSON & ASSOCIATES, LLC
DANIEL A. PAULSON
136 W. HOLM STREET
DEFORREST, WI 53532
(608) 846-2523

SUBDIVIDER/OWNER
ELISING DEVELOPMENT COMPANY, LLC
MATT ELISING
2000 PRAIRIE ST. SUITE 1000
PRAIRIE DU SAC, WI 53578
(608) 644-3906

OWNER
WINDSOR - BRISTOL INVESTMENTS, LLC
WILLIAM M. & SUSAN K. PAULSON
4607 OAK SPRINGS CIRCLE
DEFORREST, WI 53532
(608) 846-5172

